



## **BIENNIAL REPORT**

# **ARKANSAS WORKERS' COMPENSATION COMMISSION**

Biennium  
2008-2009  
2009-2010



**ARKANSAS WORKERS'  
COMPENSATION  
COMMISSION  
BIENNIAL REPORT FOR THE FISCAL  
YEARS  
2009 AND 2010**

MIKE BEEBE, GOVERNOR

**Watson Bell, Chairman  
Karen H. McKinney, Commissioner  
Philip Hood, Commissioner**

**Alan McClain, CEO**

## Table of Contents

<b>Mission</b> .....	<b>i</b>
<b>Introduction</b> .....	<b>ii</b>
<b>Organizational Chart</b> .....	<b>1</b>
<b>Divisions</b> .....	<b>2</b>
<b>Summary</b> .....	<b>5</b>
<b>Tables</b> .....	<b>6</b>

## ***MISSION***

*The Mission of the Arkansas Workers' Compensation Commission is to provide a fair, efficient and professional public agency to serve the people of the State of Arkansas by administering actions required or authorized by Arkansas Workers' Compensation Law.*

---

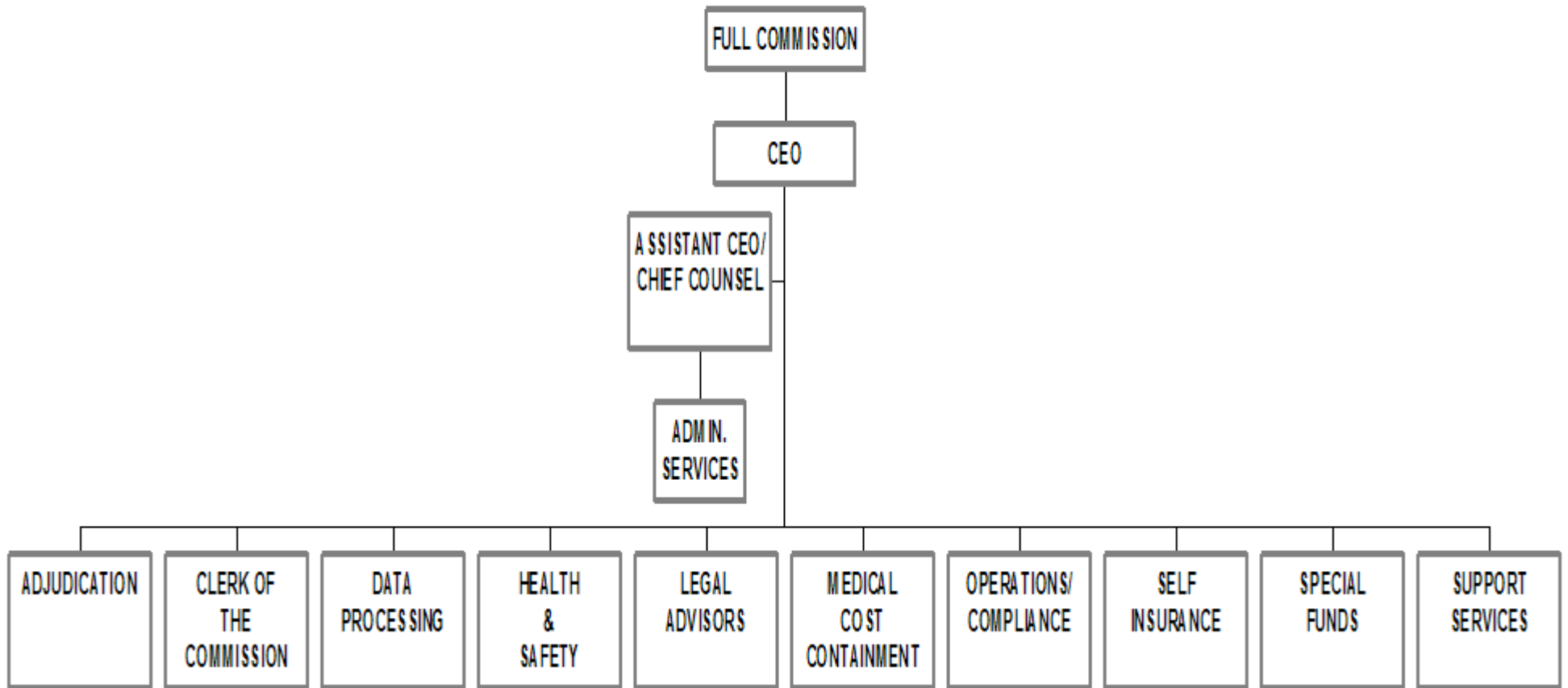
## INTRODUCTION

The Arkansas Workers' Compensation Commission (AWCC) and the law it administers was created effective December 5, 1940. It is not an insurance company; it enforces the workers' compensation laws in order to ensure that all covered employers secure coverage from commercial carriers or through self-insurance programs. Additionally, the Commission monitors workers' compensation awards to ensure that benefit providers make timely payments to eligible claimants. Workers' compensation insurance is directed to the moral, social, and economic benefits of protecting employers, employees, and their dependents from financial burdens imposed by job-related injury and disease.

Should any dispute arise among the parties involved, the Arkansas Workers' Compensation Commission, through its three Commissioners and a staff of Administrative Law Judges, may adjudicate these cases and impose binding decisions. These decisions can be appealed to the Arkansas Court of Appeals and the Arkansas Supreme Court.

Each Commissioner is appointed by the Governor for a term of six years. One represents the interests of labor, one represents management, and the Chairman acts as a neutral party, representing the interests of the public. The three Commissioners, twelve Administrative Law Judges, and four Legal Advisors accomplish all judicial duties. Administrative functions are directed by the Chief Executive Officer.

# ARKANSAS WORKERS' COMPENSATION COMMISSION



## **THE COMMISSION AND ITS DIVISIONS**

The administrative and regulatory functions of the Arkansas Workers' Compensation Commission include monitoring claim and benefit payments to injured workers; processing settlements, lump sum payments, and requests for change of physicians; ensuring employers maintain required insurance coverage; approving employer applications to operate as self-insurers; and participating in programs to explain the functions of the Commission to the general public.

### **ADJUDICATION DIVISION**

Administrative Law Judges conduct hearings when it becomes necessary to determine issues between parties in a claim. Proceedings are recorded by a court reporter and a written opinion is later issued awarding or denying compensation, based on the law and evidence presented at the hearing.

### **CLERK OF THE COMMISSION**

The Clerk's office serves as a conduit through which all pleadings, filings, hearing requests, and other documents and notices submitted to the Commission are routed. The Clerk's Division is responsible for assigning cases to the Administrative Law Judges and Legal Advisors. In addition, the Clerk directs the maintenance, storage, and retrieval of case files, maintains the required dockets for cases appealed to the Full Commission, certifies record composition, certifies transcripts upon completion of record compilation, and coordinates case tracking in which Court of Appeals or Supreme Court review or rehearing is requested.

### **DATA PROCESSING DIVISION**

The Data Processing Division maintains an automated records management system which captures data from the inception of a claim and maintains and updates this data throughout its life. The division currently maintains databases on reported claims, employers, insurance carriers, third party administrators, and various other supporting databases.

### **ADMINISTRATIVE SERVICES DIVISION**

The Commission's operations are funded from a premium tax (limited by law to three percent) on workers' compensation premiums paid by insurance companies writing workers' compensation, companies qualifying as self-insurers, and all public employers. These funds are disbursed by the Administrative Services Division. This division also develops, implements, and monitors Commission human resource systems and policies. Purchasing, accounting, investments, travel, budget analyses, and payroll transactions are the responsibility of this division.

## **HEALTH & SAFETY DIVISION**

The Health and Safety Division administers the Rule 32 Program, Accident Prevention Services, and the Voluntary Drug-Free Workplace. Through these programs, the division works with employers to develop effective loss control and monitors workers' compensation carriers to ensure they provide services to their Arkansas clients.

The Voluntary Drug-Free Workplace Program establishes criteria employers must meet in their drug-free workplace program in order to qualify for a five percent premium credit on their workers' compensation insurance. Educational materials, on-site consultations, and loss control educational services are provided by the division.

## **LEGAL ADVISOR DIVISION**

This division provides legal information and assistance to interested parties who have questions about Arkansas workers' compensation law. The Legal Advisors are attorneys who know both the current workers' compensation laws and administrative procedures. They serve as a link between unrepresented claimants and insurance adjusters, providers, and employers. Often they are able to resolve disputes informally, thereby helping to decrease litigation and keep costs down. Another service offered by the division is mediation, a process through which a neutral party helps resolve disputes without the necessity of a hearing. The division organizes and maintains the AWCC law library, and collects and analyzes case opinions.

## **MEDICAL COST CONTAINMENT DIVISION**

This division is responsible for implementing and enforcing a fee schedule limiting the reimbursement for providers treating injured workers; establishing a comprehensive managed care program; and providing an impairment rating guide to be used in assessing anatomical impairment ratings. The division also processes Change of Physician request.

## **OPERATIONS/ COMPLIANCE DIVISION**

Operations processes all reports of claims filed with the Commission. Compliance, the Commission's investigative arm, makes certain employers have insurance as required by Arkansas law which provides workers' compensation coverage for employees and assesses penalties on employers who fail to provide such coverage. Compliance also issues Certificates of Non-Coverage.

## **SELF-INSURANCE DIVISION**

This division administers individual employers and groups who qualify as self-insurers. Those granted approval to participate in the program have the same responsibilities and liabilities as all employers and insurance companies. It also compiles workers' compensation "report cards" used to monitor insurance carriers for the timeliness and appropriateness of benefit payments and form filing.

## **SPECIAL FUNDS DIVISION**

This division administers the Second Injury Trust Fund established to encourage the hiring of disabled or handicapped workers. The fund assumes the employer's liability for wage loss benefits when an employee's subsequent injury results in a combination of disabilities greater than the last injury. In cases where Second Injury Trust Fund liability exists, the employer's liability is limited to the permanent anatomical impairment rating. As of January 1, 2008, claims can no longer be made against the Second Injury Fund.

Another section of the Special Fund Division is the Death and Permanent Total Disability Trust Fund. The Fund pays weekly benefits to permanent and totally disabled workers or dependents of deceased workers after the workers' compensation insurer has paid its maximum indemnity liability as required by law.

## **SUPPORT SERVICES DIVISION**

Support Services provides information to the public concerning workers' compensation in Arkansas and support to the Full Commission, Administration, and all divisions of the agency. The division assists in the compilation of the "Laws and Rules", advisories, and forms for the Commission; coordinates the annual educational conference, assists in form seminars and health and safety seminars; and special projects for the Commission. Support Services compiles and disseminates the agency's biennial report. This division is responsible for maintaining and operating all mail room activities for the Commission and its district offices and oversees the Commission's security and maintenance of its buildings and handles all parking for the Commission staff.

## COMMISSION SUMMARY

As of June 30, 2010, the Arkansas Workers' Compensation Commission had **153** authorized positions.

As of June 30, 2010, the maximum weekly benefit rate for disability other than permanent partial disability was **\$562.00**.

As of June 30, 2010, the maximum weekly benefit rate for permanent partial disability was **\$422.00**.

There were **8,903** indemnity cases reported in Fiscal Year 2009.

There were **23,977** cases closed in Fiscal Year 2009.

There were **7,788** indemnity cases reported in Fiscal Year 2010.

There were **7,982** cases closed in Fiscal Year 2010.

The Administrative Law Judges were assigned **4,329** cases in Fiscal Year 2009. Of those, **1,405** were full hearings, **352** were reassignments, **758** were joint petitions, and **697** were joint petition reassignments.

There were **393** appeals to the Full Commission in Fiscal Year 2009.

There were **207** appeals to the Court of Appeals in Fiscal Year 2009.

The Administrative Law Judges were assigned **4,000** cases in Fiscal Year 2010. Of those, **1,216** were full hearings, **1,489** were reassignments, **621** were joint petitions, and **674** were joint petitions reassignments.

There were **365** appeals to the Full Commission in Fiscal Year 2010.

There were appeals **145** to the Court of Appeals in Fiscal Year 2010.

The Legal Advisors were assigned **60** mediations in Fiscal Year 2009.

The Legal Advisors were assigned **70** mediations in Fiscal Year 2010.

# **TABLES**

**REPORTED ACCIDENTS BY MONTH**  
**FISCAL YEAR 2009**

<b>Month</b>	<b>Reported Cases</b>	<b>Closed Cases</b>
<b>JULY</b>	881	2,161
<b>AUGUST</b>	828	6,974
<b>SEPTEMBER</b>	848	5,475
<b>OCTOBER</b>	849	3,004
<b>NOVEMBER</b>	639	557
<b>DECEMBER</b>	679	573
<b>JANUARY</b>	687	605
<b>FEBRUARY</b>	714	772
<b>MARCH</b>	752	638
<b>APRIL</b>	688	595
<b>MAY</b>	665	1,128
<b>JUNE</b>	673	1,495
<b>TOTALS</b>	<b>8,903</b>	<b>23,977</b>

**REPORTED ACCIDENTS BY MONTH**  
**FISCAL YEAR 2010**

<b>Month</b>	<b>Reported Cases</b>	<b>Closed Cases</b>
<b>JULY</b>	766	1,329
<b>AUGUST</b>	685	1,416
<b>SEPTEMBER</b>	681	504
<b>OCTOBER</b>	637	618
<b>NOVEMBER</b>	546	483
<b>DECEMBER</b>	638	472
<b>JANUARY</b>	551	553
<b>FEBRUARY</b>	649	461
<b>MARCH</b>	706	579
<b>APRIL</b>	642	574
<b>MAY</b>	634	503
<b>JUNE</b>	653	490
<b>TOTALS</b>	<b>7,788</b>	<b>7,982</b>

**MEDICAL ONLY EXPENDITURE REPORT**  
**FISCAL YEAR 2009**

<b>Public</b>	<b>Self-Insurer</b>	<b>Private</b>	<b>Total</b>
<b>\$1,934,007.64</b>	<b>\$9,597,829.31</b>	<b>\$11,499,072.83</b>	<b>\$23,030,909.78</b>

**MEDICAL ONLY EXPENDITURE REPORT**  
**FISCAL YEAR 2010**

<b>Public</b>	<b>Self-Insurer</b>	<b>Private</b>	<b>Total</b>
<b>\$1,416,073.43</b>	<b>\$9,382,627.13</b>	<b>\$8,916,542.55</b>	<b>\$19,715,243.11</b>

## EXPENDITURE REPORT - COMPENSABLE CASES

FISCAL YEAR 2009

Expenditure	Private	Self-Ins.	Public	Total
COMPENSATION	\$23,840,681.91	\$12,254,934.26	\$2,390,056.13	\$38,485,672.30
LUMP SUM	\$836,260.84	\$347,207.10	\$17,990.05	\$1,201,457.99
JOINT PETITION	\$14,518,898.19	\$4,351,265.21	\$307,657.57	\$19,177,820.97
ATTORNEY FEES	\$7,600,001.62	\$2,975,606.43	\$94,239.62	\$10,669,847.67
OTHER 1	\$720,114.22	\$296,823.03	\$11,027.92	\$1,027,965.17
HOSPITAL	\$17,374,208.78	\$7,235,084.93	\$477,672.59	\$25,086,966.30
MEDICAL	\$34,909,657.77	\$16,263,120.52	\$1,654,518.60	\$52,827,296.89
MEDICINE	\$1,774,772.85	\$1,070,248.66	\$278,465.10	\$3,123,486.61
FUNERAL	\$197,618.94	\$31,501.22	\$8,677.35	\$237,797.51
REHABILITATION	\$1,107,141.34	\$351,564.22	\$4,013.62	\$1,462,719.18
OTHER 2	\$5,883,148.69	\$1,838,929.03	\$494,228.51	\$8,216,306.23
<b>TOTAL</b>	<b>\$108,762,505.15</b>	<b>\$47,016,284.62</b>	<b>\$5,738,547.06</b>	<b>\$161,517,336.82</b>

**EXPENDITURE REPORT - COMPENSABLE CASES  
FISCAL YEAR 2010**

<b>Expenditure</b>	<b>Private</b>	<b>Self-Ins.</b>	<b>Public</b>	<b>Total</b>
<b>COMPENSATION</b>	<b>\$22,762,236.11</b>	<b>\$11,139,067.97</b>	<b>\$3,519,083.04</b>	<b>\$37,420,387.12</b>
<b>LUMP SUM</b>	<b>\$413,562.70</b>	<b>\$339,257.55</b>	<b>\$18,551.99</b>	<b>\$771,372.24</b>
<b>JOINT PETITION</b>	<b>\$14,430,221.91</b>	<b>\$3,274,676.15</b>	<b>\$191,811.14</b>	<b>\$17,896,709.20</b>
<b>ATTORNEY FEES</b>	<b>\$6,301,795.62</b>	<b>\$2,541,349.39</b>	<b>\$70,625.65</b>	<b>\$8,913,770.66</b>
<b>OTHER 1</b>	<b>\$642,933.27</b>	<b>\$259,791.16</b>	<b>\$1,785.75</b>	<b>\$904,510.18</b>
<b>HOSPITAL</b>	<b>\$11,295,670.82</b>	<b>\$4,144,670.48</b>	<b>\$1,578,793.59</b>	<b>\$17,019,134.89</b>
<b>MEDICAL</b>	<b>\$32,689,583.30</b>	<b>\$13,440,919.48</b>	<b>\$3,071,363.92</b>	<b>\$49,201,866.70</b>
<b>MEDICINE</b>	<b>\$2,408,794.53</b>	<b>\$693,757.38</b>	<b>\$350,147.84</b>	<b>\$3,452,699.75</b>
<b>FUNERAL</b>	<b>\$114,903.58</b>	<b>\$79,231.27</b>	<b>\$12,519.79</b>	<b>\$206,654.64</b>
<b>REHABILITATION</b>	<b>\$1,601,419.51</b>	<b>\$176,545.05</b>	<b>\$47,221.13</b>	<b>\$1,825,185.69</b>
<b>OTHER 2</b>	<b>\$5,289,012.22</b>	<b>\$1,220,183.36</b>	<b>\$781,065.06</b>	<b>\$7,290,260.64</b>
<b>TOTAL</b>	<b>\$97,950,133.57</b>	<b>\$37,309,449.24</b>	<b>\$9,642,968.90</b>	<b>\$144,902,551.70</b>

**CASES BY EMPLOYER TYPE**  
7/1/2008 - 6/30/2009

**Cases Reported**

<b>Employer Type: Private</b>	
Compensable	5,173
Deaths	77
Totals	5,250
<b>Employer Type: Public</b>	
Compensable	732
Deaths	3
Totals	735
<b>Employer Type: Self Insured</b>	
Compensable	1,802
Deaths	7
Totals	1,809
<b>Employer Type: Self Insured Group</b>	
Compensable	1,099
Deaths	10
Totals	1,109
<b>TOTAL THIS REPORT:</b>	<b>8,903</b>

**Cases Closed**

<b>Employer Type: Private</b>	
TTD	17,682
TPD	56
PPD	487
PTD	31
Death	211
Second Injury Fund	29
Totals	18,496
<b>Employer Type: Public</b>	
TTD	2,556
TPD	4
PPD	62
PTD	17
Death	34
Totals	2,673
<b>Employer Type: Self Insured</b>	
TTD	1,449
TPD	53
PPD	230
PTD	10
Death	5
Second Injury Fund	17
Totals	1,764
<b>Employer Type: Self Insured Group</b>	
TTD	890
TPD	10
PPD	119
PTD	4
Death	11
Second Injury Fund	10
Totals	1,044
<b>TOTAL THIS REPORT</b>	<b>23,977</b>

## CASES BY EMPLOYER TYPE

7/1/2009 - 6/30/2010

### Cases Reported

<b>Employer Type: Private</b>	
Compensable	4,479
Deaths	49
Totals	4,528
<b>Employer Type: Public</b>	
Compensable	662
Deaths	3
Totals	665
<b>Employer Type: Self Insured</b>	
Compensable	1,387
Deaths	12
Totals	1,399
<b>Employer Type: Self Insured Group</b>	
Compensable	1,188
Deaths	8
Totals	1,196
<b>TOTAL THIS REPORT:</b>	<b>7,788</b>

### Cases Closed

<b>Employer Type Private</b>	
TTD	4,406
TPD	41
PPD	357
PTD	16
Death	86
Second Injury Fund	24
Totals	4,930
<b>Employer Type Public</b>	
TTD	559
PPD	20
PTD	8
Death	3
Second Injury Fund	1
Totals	591
<b>Employer Type Self Insured</b>	
TTD	1,165
TPD	31
PPD	185
PTD	6
Death	16
Second Injury Fund	16
Totals	1,419
<b>Employer Type Self Insured Group</b>	
TTD	908
TPD	13
PPD	112
PTD	2
Death	6
Second Injury Fund	1
Totals	1,042
<b>TOTAL THIS REPORT:</b>	<b>7,982</b>

**CASES BY COUNTY****FISCAL YEAR 2009**

<b>COUNTY</b>	<b>REPORTED CASES</b>	<b>CLOSED CASES</b>
ARKANSAS	74	161
ASHLEY	58	150
BAXTER	101	268
BENTON	614	1,038
BOONE	106	273
BRADLEY	53	94
CALHOUN	10	15
CARROLL	60	134
CHICOT	28	96
CLARK	65	150
CLAY	34	150
CLEBURNE	82	160
CLEVELAND	8	35
COLUMBIA	58	188
CONWAY	51	163
CRAIGHEAD	305	818
CRAWFORD	204	395
CRITTENDEN	128	463
CROSS	50	110
DALLAS	27	84
DESHA	33	123
DREW	34	136
FAULKNER	297	597
FRANKLIN	28	72
FULTON	16	43
GARLAND	231	765
GRANT	25	78

**CASES BY COUNTY****FISCAL YEAR 2009**

<b>COUNTY</b>	<b>REPORTED CASES</b>	<b>CLOSED CASES</b>
GREENE	139	275
HEMPSTEAD	16	121
HOT SPRING	66	143
HOWARD	46	106
INDEPENDENCE	152	282
IZARD	15	59
JACKSON	64	148
JEFFERSON	317	868
JOHNSON	58	138
LAFAYETTE	8	57
LAWRENCE	29	112
LEE	34	74
LINCOLN	50	108
LITTLE RIVER	48	112
LOGAN	49	145
LONOKE	108	215
MADISON	15	37
MARION	21	84
MILLER	163	429
MISSISSIPPI	142	535
MONROE	10	61
MONTGOMERY	13	42
NEVADA	19	42
NEWTON	2	23
NO COUNTY	72	119
OUACHITA	93	207
OUT OF STATE	143	1,109

**CASES BY COUNTY****FISCAL YEAR 2009**

<b>COUNTY</b>	<b>REPORTED CASES</b>	<b>CLOSED CASES</b>
PERRY	31	37
PHILLIPS	49	211
PIKE	52	74
POINSETT	52	152
POLK	52	149
POPE	147	437
PRAIRIE	8	40
PULASKI	1,878	5,085
RANDOLPH	32	69
SALINE	162	443
SCOTT	21	68
SEARCY	16	35
SEBASTIAN	466	1,759
SEVIER	12	53
SHARP	23	65
ST FRANCIS	48	288
STONE	34	98
UNION	191	425
VAN BUREN	51	173
WASHINGTON	628	1,359
WHITE	231	417
WOODRUFF	18	43
YELL	29	85
<b>TOTALS:</b>	<b>8,903</b>	<b>23,975</b>

**CASES BY COUNTY****FISCAL YEAR 2010**

<b>COUNTY</b>	<b>REPORTED CASES</b>	<b>CLOSED CASES</b>
ARKANSAS	62	73
ASHLEY	49	62
BAXTER	105	106
BENTON	462	487
BOONE	115	83
BRADLEY	44	49
CALHOUN	8	6
CARROLL	72	54
CHICOT	25	26
CLARK	61	60
CLAY	32	34
CLEBURNE	71	73
CLEVELAND	10	10
COLUMBIA	48	70
CONWAY	55	43
CRAIGHEAD	266	248
CRAWFORD	160	172
CRITTENDEN	144	156
CROSS	55	58
DALLAS	32	30
DESHA	28	41
DREW	43	48
FAULKNER	221	250
FRANKLIN	26	27
FULTON	14	15
GARLAND	195	224
GRANT	17	19

**CASES BY COUNTY****FISCAL YEAR 2010**

<b>COUNTY</b>	<b>REPORTED CASES</b>	<b>CLOSED CASES</b>
GREENE	102	104
HEMPSTEAD	12	16
HOT SPRING	68	64
HOWARD	43	44
INDEPENDENCE	114	122
IZARD	10	11
JACKSON	40	56
JEFFERSON	300	287
JOHNSON	42	48
LAFAYETTE	9	8
LAWRENCE	34	30
LEE	29	20
LINCOLN	33	40
LITTLE RIVER	44	31
LOGAN	32	37
LONOKE	96	89
MADISON	9	15
MARION	27	34
MILLER	138	141
MISSISSIPPI	120	103
MONROE	11	15
MONTGOMERY	14	14
NEVADA	18	15
NEWTON	4	7
NO COUNTY	49	53
OUACHITA	78	81
OUT OF STATE	371	261

**CASES BY COUNTY****FISCAL YEAR 2010**

<b>COUNTY</b>	<b>REPORTED CASES</b>	<b>CLOSED CASES</b>
PERRY	28	17
PHILLIPS	39	66
PIKE	68	54
POINSETT	48	48
POLK	42	46
POPE	133	135
PRAIRIE	10	13
PULASKI	1,490	1,578
RANDOLPH	33	32
SALINE	165	139
SCOTT	14	13
SEARCY	11	20
SEBASTIAN	388	446
SEVIER	24	19
SHARP	27	36
ST FRANCIS	62	45
STONE	17	20
UNION	139	178
VAN BUREN	45	42
WASHINGTON	462	524
WHITE	220	187
WOODRUFF	11	19
YELL	45	35
<b>TOTALS:</b>	<b>7,788</b>	<b>7,982</b>

**CASES BY INDUSTRY****FISCAL YEAR 2009**

<b>INDUSTRY</b>	<b>REPORTED CASES</b>	<b>CLOSED CASES</b>	<b>DEATH CASES</b>
ADMIN OF ECONOMIC PROGRAMS	9	9	1
ADMIN. OF HUMAN RESOURCES	151	214	0
AGRICULTURAL PRODUCTION-CROPS	17	72	1
AGRICULTURAL PRODUCTION-LIVESTOCK	8	37	0
AGRICULTURAL SERVICES	82	225	1
AMUSEMENT & RECREATION SERV	48	121	2
APPAREL AND ACCESSORY STORES	27	54	0
APPAREL AND OTHER TEXTILE	17	222	0
AUTO REPAIR,SERVICES&PARKING	62	188	0
AUTOMOTIVE DEALERS & SERVICE STATION	109	329	2
BUILDING MATERIALS &GARDEN SUPP	122	380	0
BUSINESS SERVICES	397	970	5
CHEMICALS AND ALLIED PRODUCTS	40	146	1
COAL MINING	8	12	0
COMMUNICATIONS	45	91	1
CONSTRUCTION-SPECIAL TRADE CONTRAC	499	1,310	16
DEPOSITORY INSTITUTIONS	34	117	0
EATING AND DRINKING PLACES	288	925	0
EDUCATIONAL SERVICES/OLD CODE	381	1,162	1
ELECTRIC, GAS & SANITARY SERVICES	213	288	2
ELECTRONIC & OTHER ELECTRICAL EQUIPM	125	576	1
ENGINEERING & MANAGEMENT SERV	43	64	2
ENVIRONMENTAL QUALITY & HOUSING	52	84	0
EXECUTIVE,LEGISLATIVE & GENERAL	18	583	1
FABRICATED METAL PRODUCTS	135	526	1
FINANCE,TAXATION & MONETARY POLICY	16	45	0
FISHING, HUNTING AND TRAPPING	1	4	0
FOOD AND KINDRED PRODUCTS	470	990	0
FOOD STORES	176	523	1
FORESTRY	11	27	1
FURN. & HOMEFURNISHING STORES	26	109	0
FURNITURE AND FIXTURES	53	299	0

**CASES BY INDUSTRY****FISCAL YEAR 2009**

<b>INDUSTRY</b>	<b>REPORTED CASES</b>	<b>CLOSED CASES</b>	<b>DEATH CASES</b>
GENERAL BUILDING CONTRACTORS	112	645	1
GENERAL MERCHANDISE STORES	732	918	1
HEALTH SERVICES	709	1,360	0
HEAVY CONSTRUCTION EXCL BUILDINGS	300	640	6
HOLDING & OTHER INVESTMENT OFFICE	11	6	0
HOTELS & OTHER LODGING PLACES	78	314	3
INDUSTRIAL MACHINERY & EQUIP	187	774	2
INSURANCE AGTS, BROKERS & SERV	8	27	0
INSURANCE CARRIERS	19	57	0
JUSTICE,PUBLIC ORDER & SAFETY	420	467	3
LEATHER AND LEATHER PRODUCTS	19	62	0
LEGAL SERVICES	6	15	0
LOCAL & INTERURBAN PASSENGER TRANSP	58	84	0
LUMBER & WOOD PRODUCTS	173	891	2
MEAS ANALYZ & CONTR INSTRUMENTS	21	34	0
MEMBERSHIP ORGANIZATIONS	45	93	1
METAL MINING	9	9	0
MISCELLANEOUS MFG INDUSTRIES	25	96	0
MISCELLANEOUS REPAIR SERVICES	24	67	0
MISCELLANEOUS RETAIL	77	188	0
MOTION PICTURES	3	20	0
MUSEUMS,BOTANICAL,ZOOLOGICAL GARD	1	2	0
NATIONAL SECURITY & INTL AFFAIRS	17	34	0
NONCLASSIFIABLE ESTABLISHMENTS	32	34	1
NONDEPOSITORY INSTITUTIONS	1	7	0
NONMETALLIC MINERALS,EXCEPT FUELS	9	29	0
OIL AND GAS EXTRACTION	155	158	2
PAPER AND ALLIED PRODUCTS	87	291	0
PERSONAL SERVICES	44	123	0
PETROLEUM AND COAL PRODUCTS	20	43	0
PIPELINES EXCEPT NATURAL GAS	12	8	0
PRIMARY METAL INDUSTRIES	69	371	5

# CASES BY INDUSTRY

FISCAL YEAR 2009

INDUSTRY	REPORTED CASES	CLOSED CASES	DEATH CASES
PRINTING AND PUBLISHING	38	241	0
PRIVATE HOUSEHOLDS	0	2	0
RAILROAD TRANSPORTATION	0	6	0
REAL ESTATE	33	180	0
RUBBER & MISC. PLASTICS PRODUCTS	102	436	3
SECURITY AND COMMODITY BROKERS	4	5	0
SERVICES, NEC	12	24	0
SOCIAL SERVICES	186	510	3
STONE, CLAY & GLASS & CONCRETE PRODU	57	185	1
TEXTILE MILL PRODUCTS	2	23	0
TOBACCO PRODUCTS	0	1	0
TRANSPORTATION BY AIR	32	69	0
TRANSPORTATION EQUIPMENT	109	398	1
TRANSPORTATION SERVICES	14	28	0
TRUCKING & WAREHOUSING	814	1,757	15
U.S. POSTAL SERVICE	0	1	0
UNKNOWN	13	542	0
WATER TRANSPORTATION	8	13	0
WHOLESALE TRADE-DURABLE GOODS	161	499	4
WHOLESALE TRADE-NONDURABLE GOODS	152	483	3
<b>TOTALS:</b>	<b>8,903</b>	<b>23,972</b>	<b>97</b>

**CASES BY INDUSTRY****FISCAL YEAR 2010**

<b>INDUSTRY</b>	<b>REPORTED CASES</b>	<b>CLOSED CASES</b>	<b>DEATH CASES</b>
ADMIN OF ECONOMIC PROGRAMS	11	6	0
ADMIN. OF HUMAN RESOURCES	120	95	0
AGRICULTURAL PRODUCTION-CROPS	14	15	0
AGRICULTURAL PRODUCTION-LIVESTOCK	17	18	0
AGRICULTURAL SERVICES	95	77	1
AMUSEMENT & RECREATION SERV	43	50	1
APPAREL AND ACCESSORY STORES	14	13	0
APPAREL AND OTHER TEXTILE	12	17	0
AUTO REPAIR,SERVICES&PARKING	56	69	0
AUTOMOTIVE DEALERS & SERVICE STATION	111	108	0
BUILDING MATERIALS &GARDEN SUPP	90	67	0
BUSINESS SERVICES	351	361	2
CHEMICALS AND ALLIED PRODUCTS	28	44	1
COAL MINING	0	2	0
COMMUNICATIONS	47	51	0
CONSTRUCTION-SPECIAL TRADE CONTRAC	373	453	6
DEPOSITORY INSTITUTIONS	27	18	0
EATING AND DRINKING PLACES	255	299	1
EDUCATIONAL SERVICES/OLD CODE	425	374	2
ELECTRIC, GAS & SANITARY SERVICES	189	167	5
ELECTRONIC & OTHER ELECTRICAL EQUIPM	106	114	3
ENGINEERING & MANAGEMENT SERV	49	35	0
ENVIRONMENTAL QUALITY & HOUSING	42	37	0
EXECUTIVE,LEGISLATIVE & GENERAL	8	23	0
FABRICATED METAL PRODUCTS	89	129	0
FINANCE,TAXATION & MONETARY POLICY	14	10	0
FISHING, HUNTING AND TRAPPING	6	3	0
FOOD AND KINDRED PRODUCTS	376	449	4
FOOD STORES	161	131	2
FORESTRY	5	15	0
FURN. & HOMEFURNISHING STORES	26	26	0
FURNITURE AND FIXTURES	34	40	0

**CASES BY INDUSTRY****FISCAL YEAR 2010**

<b>INDUSTRY</b>	<b>REPORTED CASES</b>	<b>CLOSED CASES</b>	<b>DEATH CASES</b>
GENERAL BUILDING CONTRACTORS	91	92	0
GENERAL MERCHANDISE STORES	517	512	1
HEALTH SERVICES	730	619	2
HEAVY CONSTRUCTION EXCL BUILDINGS	308	245	7
HOLDING & OTHER INVESTMENT OFFICE	10	11	0
HOTELS & OTHER LODGING PLACES	64	61	2
INDUSTRIAL MACHINERY & EQUIP	120	172	0
INSURANCE AGTS, BROKERS & SERV	1	4	0
INSURANCE CARRIERS	13	11	0
JUSTICE,PUBLIC ORDER & SAFETY	427	382	5
LEATHER AND LEATHER PRODUCTS	8	11	0
LEGAL SERVICES	6	4	0
LOCAL & INTERURBAN PASSENGER TRANSP	41	62	1
LUMBER & WOOD PRODUCTS	146	213	1
MEAS ANALYZ & CONTR INSTRUMENTS	30	15	0
MEMBERSHIP ORGANIZATIONS	37	26	0
METAL MINING	3	5	1
MISCELLANEOUS MFG INDUSTRIES	16	22	1
MISCELLANEOUS REPAIR SERVICES	26	25	0
MISCELLANEOUS RETAIL	73	63	0
MOTION PICTURES	2	5	0
MUSEUMS,BOTANICAL,ZOOLOGICAL GARD	2	2	0
NATIONAL SECURITY & INTL AFFAIRS	7	5	0
NONCLASSIFIABLE ESTABLISHMENTS	74	33	1
NONDEPOSITORY INSTITUTIONS	1	0	0
NONMETALLIC MINERALS,EXCEPT FUELS	17	12	0
OIL AND GAS EXTRACTION	108	103	1
PAPER AND ALLIED PRODUCTS	94	82	5
PERSONAL SERVICES	38	36	0
PETROLEUM AND COAL PRODUCTS	24	17	1
PIPELINES EXCEPT NATURAL GAS	5	4	0
PRIMARY METAL INDUSTRIES	68	102	2

# CASES BY INDUSTRY

FISCAL YEAR 2010

INDUSTRY	REPORTED CASES	CLOSED CASES	DEATH CASES
PRINTING AND PUBLISHING	23	37	1
PRIVATE HOUSEHOLDS	1	1	0
RAILROAD TRANSPORTATION	2	1	0
REAL ESTATE	49	44	0
RUBBER & MISC. PLASTICS PRODUCTS	82	110	0
SECURITY AND COMMODITY BROKERS	2	1	0
SERVICES, NEC	9	10	0
SOCIAL SERVICES	159	168	2
STONE, CLAY & GLASS & CONCRETE PRODU	44	107	0
TEXTILE MILL PRODUCTS	1	10	0
TRANSPORTATION BY AIR	44	28	1
TRANSPORTATION EQUIPMENT	79	115	1
TRANSPORTATION SERVICES	10	9	0
TRUCKING & WAREHOUSING	702	741	7
U.S. POSTAL SERVICE	2	0	0
UNKNOWN	13	71	0
WATER TRANSPORTATION	4	11	0
WHOLESALE TRADE-DURABLE GOODS	161	141	1
WHOLESALE TRADE-NONDURABLE GOODS	100	105	0
<b>TOTALS:</b>	<b>7,788</b>	<b>7,982</b>	<b>72</b>

**PART OF BODY INJURED**  
**FISCAL YEAR 2009**

<b>PART OF BODY INJURED</b>	<b>REPORTED CASES</b>	<b>CLOSED CASES</b>
ABDOMEN (INCLUDING GROIN)	274	381
ANKLE	415	872
ARTIFICIAL APPLIANCE	0	1
BRAIN	12	60
BUTTOCKS	18	26
CHEST INC: RIBS,STERNUM,AND SOFT TISS	113	339
DISC (NECK AREA)	5	44
DISC (TRUNK AREA)	10	34
EAR(S)	5	73
ELBOW	165	331
EYE(S)	59	312
FACIAL BONES	11	86
FINGER(S)	455	1,401
FOOT	290	798
GREAT TOE	15	16
HAND	353	922
HEART	21	56
HIP	93	153
INTERNAL ORGANS	13	922
KNEE	989	1,801
LOW BACK AREA INC:LUMBAR & LUMBO-SAC	1,386	5,195
LOWER ARM	240	337
LOWER LEG	249	478
LUMBAR AND/OR SACRAL VERTEBRA	8	17
LUNGS	47	53
MOUTH	6	12
MULT SYSTEMS AND MULT BODY SYSTEMS	172	259
MULTIPLE BODY PARTS INJURY	1,362	2,895
MULTIPLE HEAD INJURY	88	158
MULTIPLE LOWER EXTREMITIES INJURY	43	283
MULTIPLE NECK INJURY	69	94

**PART OF BODY INJURED****FISCAL YEAR 2009**

<b>PART OF BODY INJURED</b>	<b>REPORTED CASES</b>	<b>CLOSED CASES</b>
MULTIPLE TRUNK INJURY	73	318
MULTIPLE UPPER EXTREMITIES	71	321
NO PHYSICAL INJURY	26	52
NOSE	15	41
OTHER FACIAL SOFT TISSUE	23	58
PELVIS	14	212
SACRUM AND COCCYX	7	23
SHOULDER(S)	738	849
SKULL	12	163
SOFT TISSUE	132	319
SPINAL CORD	2	6
SPINAL CORD	1	0
TEETH	5	37
THIGH	30	85
THUMB	118	172
TOE(S)	30	145
TRACHEA	1	0
UNDEFINED	7	255
UNKNOWN - INSUFFICIENT INFORMATION	22	74
UNSPEC	18	295
UPPER ARM (INC: CLAVICLE AND SCAPULA)	106	465
UPPER BACK AREA (THORACIC AREA)	71	455
VERTEBRAE	2	13
WRIST	299	1,069
WRIST(S) & HAND(S)	94	141
<b>TOTALS:</b>	<b>8,903</b>	<b>23,977</b>

**PART OF BODY INJURED**  
**FISCAL YEAR 2010**

<b>PART OF BODY INJURED</b>	<b>REPORTED CASES</b>	<b>CLOSED CASES</b>
ABDOMEN (INCLUDING GROIN)	244	189
ANKLE	351	339
BRAIN	8	11
BUTTOCKS	17	7
CHEST INC: RIBS,STERNUM,AND SOFT TISS	106	113
DISC (NECK AREA)	13	9
DISC (TRUNK AREA)	16	8
EAR(S)	11	24
ELBOW	120	128
EYE(S)	47	73
FACIAL BONES	10	20
FINGER(S)	373	396
FOOT	265	258
GREAT TOE	11	11
HAND	291	302
HEART	25	25
HIP	71	65
INTERNAL ORGANS	17	94
KNEE	799	763
LOW BACK AREA INC:LUMBAR & LUMBO-SAC	1,114	1,413
LOWER ARM	148	163
LOWER LEG	220	195
LUMBAR AND/OR SACRAL VERTEBRA	16	6
LUNGS	59	38
MOUTH	6	5
MULT SYSTEMS AND MULT BODY SYSTEMS	129	115
MULTIPLE BODY PARTS INJURY	1,242	1,209
MULTIPLE HEAD INJURY	69	64
MULTIPLE LOWER EXTREMITIES INJURY	77	65
MULTIPLE NECK INJURY	48	46
MULTIPLE TRUNK INJURY	87	74

**PART OF BODY INJURED****FISCAL YEAR 2010**

<b>PART OF BODY INJURED</b>	<b>REPORTED CASES</b>	<b>CLOSED CASES</b>
MULTIPLE UPPER EXTREMITIES	126	90
NO PHYSICAL INJURY	19	14
NOSE	12	8
OTHER FACIAL SOFT TISSUE	16	22
PELVIS	12	38
SACRUM AND COCCYX	7	10
SHOULDER(S)	711	618
SKULL	21	41
SOFT TISSUE	124	123
SPINAL CORD	7	3
SPINAL CORD	2	0
TEETH	6	11
THIGH	34	29
THUMB	103	82
TOE(S)	38	34
TRACHEA	1	0
UNDEFINED	9	31
UNKNOWN - INSUFFICIENT INFORMATION	20	17
UNSPEC	17	27
UPPER ARM (INC: CLAVICLE AND SCAPULA)	85	119
UPPER BACK AREA (THORACIC AREA)	84	106
VERTEBRAE	2	2
WRIST	264	264
WRIST(S) & HAND(S)	58	65
<b>TOTALS:</b>	<b>7,788</b>	<b>7,982</b>

**FATALITIES BY AGE AND SEX  
FISCAL YEAR 2009**

<b>Age In Years</b>	<b>Female</b>	<b>Male</b>	<b>Unknown</b>	<b>Total</b>
14-19	0	3	0	3
20-29	2	9	0	11
30-39	1	11	0	12
40-49	5	28	0	33
50-59	1	20	0	21
60-69	1	12	0	13
70-79	1	1	0	2
Unknown	0	2	0	2
<b>TOTAL</b>	11	86	0	97
TOTAL FATALITIES FOR FY 2009 - 97				

**FATALITIES BY AGE AND SEX  
FISCAL YEAR 2010**

<b>Age In Years</b>	<b>Female</b>	<b>Male</b>	<b>Unknown</b>	<b>Total</b>
14-19	0	2	0	2
20-29	1	8	0	9
30-39	2	8	0	10
40-49	1	16	0	17
50-59	2	19	0	21
60-69	1	9	1	11
70-79	0	2	0	2
Unknown	0	0	0	0
<b>TOTAL</b>	<b>7</b>	<b>64</b>	<b>1</b>	<b>72</b>
TOTAL FATALITIES FOR FY 2010 - 72				