



## **BIENNIAL REPORT**

# **ARKANSAS WORKERS' COMPENSATION COMMISSION**

Biennium  
2000-2001  
2001-2002



**ARKANSAS WORKERS'  
COMPENSATION  
COMMISSION  
BIENNIAL REPORT FOR THE FISCAL  
YEARS  
2001 AND 2002**

**MIKE HUCKABEE, GOVERNOR**

**Eldon F. Coffman, Chairman  
Shelby W. Turner, Commissioner  
Joe E. Yates, Commissioner**

**Julie Benafield Bowman, CEO**

## Table of Contents

Mission . . . . .	i
Introduction . . . . .	ii
Organizational Chart . . . . .	1
Divisions . . . . .	2
Special Needs . . . . .	5
Summary . . . . .	6
Tables . . . . .	7

## ***MISSION***

*The Mission of the Arkansas Workers' Compensation Commission is to provide a fair, efficient and professional public agency to serve the people of the State of Arkansas by administering actions required or authorized by Arkansas Workers' Compensation Law.*

---

## INTRODUCTION

The Arkansas Workers' Compensation Commission and the law it administers was created effective December 5, 1940. It is not an insurance company; it enforces the workers' compensation laws in order to ensure that all covered employers secure coverage from commercial carriers or through self-insurance programs. Additionally, the Commission monitors workers' compensation awards to ensure that benefit providers make timely payments to eligible claimants. Workers' compensation insurance is directed to the moral, social, and economic benefits of protecting employers, employees, and their dependents from financial burdens imposed by job-related injury and disease.

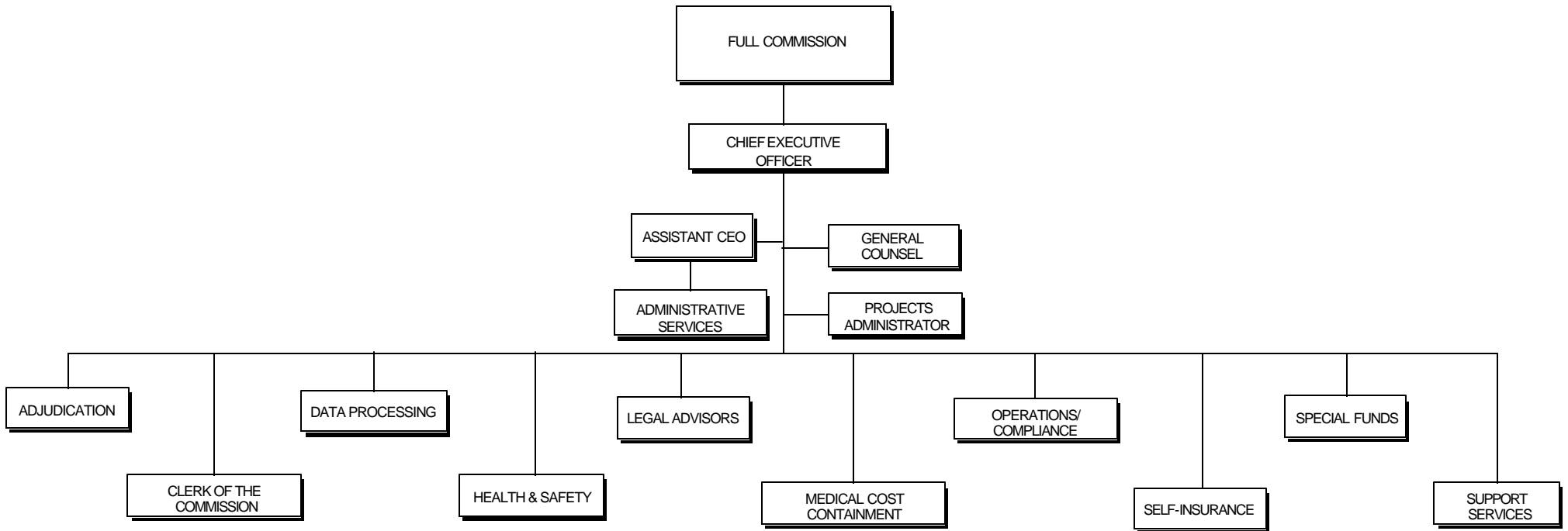
Should any dispute arise among the parties involved, the Arkansas Workers' Compensation Commission, through its three Commissioners and a staff of Administrative Law Judges, may adjudicate these cases and impose binding decisions. These decisions can be appealed to the Arkansas Court of Appeals and the Arkansas Supreme Court.

Each Commissioner is appointed by the Governor for a term of six years. One represents the interests of labor, one represents management, and the Chairman acts as a neutral party, representing the interests of the public. The three Commissioners, thirteen Administrative Law Judges, and six Legal Advisors accomplish all judicial duties. Administrative functions are directed by the Chief Executive Officer.

# WORKERS' COMPENSATION COMMISSION

---

## ORGANIZATIONAL CHART



January 1, 2003

## **THE COMMISSION AND ITS DIVISIONS**

The administrative and regulatory functions of the Arkansas Workers' Compensation Commission include monitoring claim and benefit payments to injured workers; processing settlements, lump sum payments, and requests for change of physicians; ensuring employers maintain required insurance coverage; approving employer applications to operate as self-insurers; and participating in programs to explain the functions of the Commission to the general public.

### **ADJUDICATION DIVISION**

Administrative Law Judges conduct hearings when it becomes necessary to determine issues between parties in a claim. Proceedings are recorded by a court reporter and a written opinion is later issued awarding or denying compensation, based on the law and evidence presented at the hearing.

### **CLERK OF THE COMMISSION**

The Clerk's office serves as a conduit through which all pleadings, filings, hearing requests, and other documents and notices submitted to the Commission are routed. The Clerk's Division is responsible for assigning cases to the Administrative Law Judges and Legal Advisors. In addition, the Clerk directs the maintenance, storage, and retrieval of case files, maintains the required dockets for cases appealed to the Full Commission, reviews the record on appealed cases, certifies record composition, certifies transcripts upon completion of record compilation, and coordinates case tracking in which Supreme Court review or rehearing is requested.

### **DATA PROCESSING DIVISION**

The Data Processing Division maintains an automated records management system which captures data from the inception of a claim and maintains and updates this data throughout its life. The division currently maintains databases consisting of over 250,000 reported claims, 78,000 employers, 480 insurance carriers and adjusters, and various other supporting databases.

### **ADMINISTRATIVE SERVICES DIVISION**

The Commission's operations are funded from a premium tax (limited by law to three percent) on workers' compensation premiums paid by insurance companies writing workers' compensation, companies qualifying as self-insurers, and all public employers. These funds are disbursed by the Administrative Services Division. This division also develops, implements, and monitors Commission human resource systems and policies. Purchasing, accounting, investments, travel, budget analyses, and payroll transactions are the responsibility of this division.

## **HEALTH & SAFETY DIVISION**

The Health and Safety Division administers the Rule 32 Program, Accident Prevention Services Program, and the Voluntary Drug-Free Workplace Program. Through these programs, the division works with employers to develop effective loss control programs and monitors workers' compensation carriers to ensure they provide services to their Arkansas clients.

The Voluntary Drug-Free Workplace Program establishes criteria employers must meet in their drug-free workplace program in order to qualify for a five percent premium credit on their workers' compensation insurance. Educational materials, on-site consultations, and loss control educational programs are provided by the division.

## **LEGAL ADVISOR DIVISION**

This division provides legal information and assistance to interested parties who have questions about Arkansas workers' compensation law. The Legal Advisors are attorneys who know both the current workers' compensation laws and administrative procedures. They serve as a link between unrepresented claimants and insurance adjusters, providers, and employers. Often they are able to resolve disputes informally, thereby helping to decrease litigation and keep costs down. Another service offered by the division is mediation, a process through which a neutral party helps resolve disputes without the necessity of a hearing. Upon request, attorneys from the division make on-site visits to businesses.

## **MEDICAL COST CONTAINMENT DIVISION**

This division is responsible for implementing and enforcing a fee schedule limiting the reimbursement for providers treating injured workers; establishing a comprehensive managed care program; and providing an impairment rating guide to be used in assessing anatomical impairment ratings.

## **OPERATIONS/COMPLIANCE DIVISION**

Operations processes all reports of claims filed with the Commission. It also compiles workers' compensation "report cards" used to monitor insurance carriers for the timeliness and appropriateness of benefit payments and form filing. Compliance, the Commission's investigative arm, makes certain employers have insurance as required by Arkansas law which provides workers' compensation coverage for employees and assesses penalties on employers who fail to provide such coverage. Compliance also issues Certificates of Non-Coverage.

## **SELF-INSURANCE DIVISION**

This division administers individual employers and groups who qualify as self-insurers. Those granted approval to participate in the program have the same responsibilities and liabilities as all employers and insurance companies.

## **SPECIAL FUNDS DIVISION**

This division administers the Second Injury Trust Fund established to encourage the hiring of disabled or handicapped workers. The fund assumes the employer's liability for wage loss benefits when an employee's subsequent injury results in a combination of disabilities greater than the last injury. In cases where Second Injury Trust Fund liability exists, the employer's liability is limited to the permanent anatomical impairment rating.

The Special Funds Division also administers the Death and Permanent Total Disability Trust Fund, a fund unique to Arkansas. Arkansas' workers' compensation law caps the indemnity liability an employer owes for death and permanent total disability benefits at \$50,000 for injuries prior to March 1, 1981, and \$75,000 for injuries occurring on or after March 1, 1981. Thereafter, this fund pays lifetime benefits to employees found to be totally and permanently disabled as the result of a work-related injury. Compensation for the work-related death of an employee shall be paid to those persons who were wholly and actually dependent upon the deceased employee, in accordance with provision in the law.

## **SUPPORT SERVICES DIVISION**

Support Services provides information to the public concerning workers' compensation in Arkansas and support to the Full Commission, Administration, and all divisions of the agency. The division assists in the compilation of the "Laws and Rules", advisories, and forms for the Commission; coordinates the annual educational conference as well as assisting in form seminars and health and safety seminars; and often coordinates special projects and programs for the Commission. Support Services compiles and disseminates the agency's biennial report. This division is responsible for maintaining and operating all mail room activities for the Commission and oversees the Commission's security and maintenance of its buildings.

## **SPECIAL NEEDS**

In its October 17, 2002 report to the commission, the actuarial firm Osborn, Carreiro & Associates, Inc., reported an unfunded liability of \$20,494,293 as of June 30, 2002 in the Death and Permanent Total Disability Fund. Also, in its October 21, 2002 report to the Commission, the firm reported an unfunded liability of \$7,053,253 as of June 30, 2002 in the Second Injury Fund.

The actuarial firm made three recommendations to the commission that could help begin to alleviate the unfunded liabilities:

1. Increase the allocation of the premium tax to the funds. Since the commission has been allocating all of the premium tax not required for operations of the commission to the funds, this recommendation would require an increase in the premium tax, an option that is not appealing at this time.
2. Change the law to allow better investments. A.C.A. 11-9-301(d) requires the commission to invest its funds assets according to A.C.A. 19-3-219(a), which basically requires investments in certificates of deposit issued by banks located in Arkansas. This option was explored during the 2001 legislative session but due to market conditions, no action was taken.
3. Raise the threshold at which the Death and Permanent Total Disability Fund takes over disability payments. Presently, the fund takes over disability payment when an insurance carrier or self-insured employer has paid out \$75,000 in indemnity benefits. That threshold has not been raised since 1981, although the state maximum compensation rate has increased over 300% since that time. This option will be explored during the 2003 legislative session.

## COMMISSION SUMMARY

As of June 30, 2002, the Arkansas Workers' Compensation Commission had **155** authorized positions.

As of June 30, 2002, the maximum weekly benefit rate for disability other than permanent partial disability was **\$425.00**.

As of June 30, 2002, the maximum weekly benefit rate for permanent partial disability was **\$319.00**.

There were **12,867** indemnity cases reported in Fiscal Year 2001.

There were **10,940** cases closed in Fiscal Year 2001.

There were **12,305** indemnity cases reported in Fiscal Year 2002.

There were **10,805** cases closed in Fiscal Year 2002.

The Administrative Law Judges were assigned **5,327** cases in Fiscal Year 2001. Of those, **2,652** were full hearings, **1,277** were reassignments, and **1,398** were joint petitions.

There were **516** appeals to the Full Commission in Fiscal Year 2001.

There were **185** appeals to the Court of Appeals in Fiscal Year 2001.

The Administrative Law Judges were assigned **5,552** cases in Fiscal Year 2002. Of those, **2,563** were full hearings, **1,403** were reassignments, and **1,586** were joint petitions.

There were **466** appeals to the Full Commission in Fiscal Year 2002.

There were **132** appeals to the Court of Appeals in Fiscal Year 2002.

The Legal Advisors were assigned **128** mediations in Fiscal Year 2001.

The Legal Advisors were assigned **102** mediations in Fiscal Year 2002.

# **TABLES**

**INJURIES BY MONTH**  
**FISCAL YEAR 2001**

<b>MONTH</b>	<b>REPORTED CASES</b>	<b>CLOSED CASES</b>
<b>JULY</b>	1,006	915
<b>AUGUST</b>	1,378	803
<b>SEPTEMBER</b>	1,182	923
<b>OCTOBER</b>	1,127	670
<b>NOVEMBER</b>	977	1,046
<b>DECEMBER</b>	808	530
<b>JANUARY</b>	1,135	1,142
<b>FEBRUARY</b>	970	1,055
<b>MARCH</b>	1,018	1,214
<b>APRIL</b>	1,002	1,091
<b>MAY</b>	1,118	872
<b>JUNE</b>	1,146	679
<b>TOTALS</b>	<b>12,867</b>	<b>10,940</b>

**INJURIES BY MONTH**  
**FISCAL YEAR 2002**

<b>MONTH</b>	<b>REPORTED CASES</b>	<b>CLOSED CASES</b>
<b>JULY</b>	1,093	812
<b>AUGUST</b>	1,249	1,141
<b>SEPTEMBER</b>	942	926
<b>OCTOBER</b>	1,170	936
<b>NOVEMBER</b>	939	658
<b>DECEMBER</b>	826	431
<b>JANUARY</b>	953	1,358
<b>FEBRUARY</b>	910	1,040
<b>MARCH</b>	1,011	740
<b>APRIL</b>	1,075	825
<b>MAY</b>	1,106	855
<b>JUNE</b>	1,031	1,083
<b>TOTALS</b>	<b>12,305</b>	<b>10,805</b>

## CASES BY COUNTY

### FISCAL YEAR 2001

COUNTY	REPORTED CASES	CLOSED CASES
<b>Arkansas</b>	140	112
<b>Ashley</b>	120	90
<b>Baxter</b>	160	178
<b>Benton</b>	561	514
<b>Boone</b>	180	143
<b>Bradley</b>	62	59
<b>Calhoun</b>	8	14
<b>Carroll</b>	70	72
<b>Chicot</b>	69	44
<b>Clark</b>	122	98
<b>Clay</b>	65	60
<b>Cleburne</b>	106	101
<b>Cleveland</b>	20	18
<b>Columbia</b>	128	94
<b>Conway</b>	60	47
<b>Craighead</b>	432	371
<b>Crawford</b>	191	151
<b>Crittenden</b>	220	162
<b>Cross</b>	88	74
<b>Dallas</b>	67	45
<b>Desha</b>	55	35

## CASES BY COUNTY

### FISCAL YEAR 2001

COUNTY	REPORTED CASES	CLOSED CASES
<b>Drew</b>	113	95
<b>Faulkner</b>	374	282
<b>Franklin</b>	41	28
<b>Fulton</b>	23	22
<b>Garland</b>	421	336
<b>Grant</b>	61	58
<b>Greene</b>	194	168
<b>Hempstead</b>	83	94
<b>Hot Spring</b>	101	67
<b>Howard</b>	92	60
<b>Independence</b>	177	162
<b>Izard</b>	31	36
<b>Jackson</b>	91	82
<b>Jefferson</b>	470	437
<b>Johnson</b>	81	63
<b>Lafayette</b>	18	22
<b>Lawrence</b>	57	41
<b>Lee</b>	40	30
<b>Lincoln</b>	44	33
<b>Little River</b>	59	39
<b>Logan</b>	79	83

## **CASES BY COUNTY**

### **FISCAL YEAR 2001**

<b>COUNTY</b>	<b>REPORTED CASES</b>	<b>CLOSED CASES</b>
<b>Lonoke</b>	116	112
<b>Madison</b>	15	18
<b>Marion</b>	48	55
<b>Miller</b>	186	269
<b>Mississippi</b>	237	177
<b>Monroe</b>	32	32
<b>Montgomery</b>	24	22
<b>Nevada</b>	32	28
<b>Newton</b>	11	4
<b>Ouachita</b>	121	97
<b>Perry</b>	30	16
<b>Phillips</b>	111	98
<b>Pike</b>	38	31
<b>Poinsett</b>	88	65
<b>Polk</b>	74	57
<b>Pope</b>	230	210
<b>Prairie</b>	14	19
<b>Pulaski</b>	2,271	1,935
<b>Randolph</b>	54	52
<b>St. Francis</b>	124	78
<b>Saline</b>	225	183

**CASES BY COUNTY**  
**FISCAL YEAR 2001**

<b>COUNTY</b>	<b>REPORTED CASES</b>	<b>CLOSED CASES</b>
<b>Scott</b>	27	30
<b>Searcy</b>	19	14
<b>Sebastian</b>	845	780
<b>Sevier</b>	44	64
<b>Sharp</b>	47	33
<b>Stone</b>	53	30
<b>Union</b>	280	248
<b>Van Buren</b>	48	68
<b>Washington</b>	674	577
<b>White</b>	269	227
<b>Woodruff</b>	31	21
<b>Yell</b>	62	53
<b>Out of State</b>	732	479
<b>Undetermined</b>	81	38
<b>TOTALS</b>	<b>12,867</b>	<b>10,940</b>

## CASES BY COUNTY

### FISCAL YEAR 2002

COUNTY	REPORTED CASES	CLOSED CASES
<b>Arkansas</b>	150	125
<b>Ashley</b>	115	98
<b>Baxter</b>	140	135
<b>Benton</b>	537	505
<b>Boone</b>	148	187
<b>Bradley</b>	96	73
<b>Calhoun</b>	17	12
<b>Carroll</b>	84	63
<b>Chicot</b>	42	41
<b>Clark</b>	107	101
<b>Clay</b>	79	51
<b>Cleburne</b>	111	91
<b>Cleveland</b>	16	15
<b>Columbia</b>	138	106
<b>Conway</b>	75	56
<b>Craighead</b>	480	372
<b>Crawford</b>	177	147
<b>Crittenden</b>	179	169
<b>Cross</b>	79	78
<b>Dallas</b>	43	38
<b>Desha</b>	71	55

## CASES BY COUNTY

### FISCAL YEAR 2002

COUNTY	REPORTED CASES	CLOSED CASES
<b>Drew</b>	78	78
<b>Faulkner</b>	310	345
<b>Franklin</b>	55	49
<b>Fulton</b>	19	24
<b>Garland</b>	490	384
<b>Grant</b>	45	37
<b>Greene</b>	141	137
<b>Hempstead</b>	76	66
<b>Hot Spring</b>	97	95
<b>Howard</b>	92	88
<b>Independence</b>	165	157
<b>Izard</b>	35	22
<b>Jackson</b>	66	71
<b>Jefferson</b>	410	362
<b>Johnson</b>	84	88
<b>Lafayette</b>	16	19
<b>Lawrence</b>	56	42
<b>Lee</b>	29	25
<b>Lincoln</b>	38	31
<b>Little River</b>	75	36
<b>Logan</b>	59	110

**CASES BY COUNTY**  
**FISCAL YEAR 2002**

COUNTY	REPORTED CASES	CLOSED CASES
<b>Lonoke</b>	106	108
<b>Madison</b>	31	23
<b>Marion</b>	56	38
<b>Miller</b>	232	191
<b>Mississippi</b>	259	187
<b>Monroe</b>	29	22
<b>Montgomery</b>	18	20
<b>Nevada</b>	33	26
<b>Newton</b>	10	7
<b>Ouachita</b>	95	106
<b>Perry</b>	21	17
<b>Phillips</b>	82	85
<b>Pike</b>	42	34
<b>Poinsett</b>	70	68
<b>Polk</b>	73	69
<b>Pope</b>	219	188
<b>Prairie</b>	37	20
<b>Pulaski</b>	2,130	1,885
<b>Randolph</b>	43	40
<b>St. Francis</b>	120	92
<b>Saline</b>	223	189

**CASES BY COUNTY**  
**FISCAL YEAR 2002**

<b>COUNTY</b>	<b>REPORTED CASES</b>	<b>CLOSED CASES</b>
<b>Scott</b>	33	24
<b>Searcy</b>	11	19
<b>Sebastian</b>	751	706
<b>Sevier</b>	40	48
<b>Sharp</b>	48	44
<b>Stone</b>	53	38
<b>Union</b>	265	246
<b>Van Buren</b>	50	50
<b>Washington</b>	640	504
<b>White</b>	281	214
<b>Woodruff</b>	21	20
<b>Yell</b>	66	59
<b>Out of State</b>	729	595
<b>Undetermined</b>	68	39
<b>TOTALS</b>	<b>12,305</b>	<b>10,805</b>

## CASES BY INDUSTRY

### FISCAL YEAR 2001

<b>INDUSTRY</b>	Reported Cases	Closed Cases	Death Cases
Agricultural Production–Crops	16	12	0
Agricultural Production–Livestock	35	41	0
Agricultural Services	123	97	2
Forestry	6	2	0
Fishing, Hunting & Trapping	2	0	0
Metal Mining	1	1	0
Oil & Gas Extraction	50	39	1
Nonmetallic Minerals, Except Fuels	23	21	0
General Building Contractors	244	179	1
Heavy Construction, Excl. Building	382	356	1
Special Trade Contractors	759	550	5
Food & Kindred Products	591	638	0
Textile Mill Products	20	12	0
Apparel & Other Textile	51	54	0
Lumber & Wood Products	589	502	7
Furniture & Fixtures	161	146	0
Paper & Allied Products	207	141	1
Printing & Publishing	132	81	0
Chemicals & Allied Products	78	49	2
Petroleum & Coal Products	20	9	0

## CASES BY INDUSTRY

### FISCAL YEAR 2001

<b>INDUSTRY</b>	Reported Cases	Closed Cases	Death Cases
Rubber & Misc. Plastics Products	365	366	0
Leather & Leather Products	30	32	0
Stone, Clay & Glass Products	146	112	1
Primary Metal Industries	241	154	0
Fabricated Metal Products	274	196	1
Industrial Machinery & Equipment	314	167	1
Electronic & Other Electric Equipment	190	169	0
Transportation Equipment	254	190	2
Instruments & Related Products	31	17	0
Misc. Manufacturing Industries	31	44	0
Railroad Transportation	1	1	0
Local & Interurban Passenger Transit	55	45	1
Trucking & Warehousing	1,189	748	12
Water Transportation	5	5	0
Transportation By Air	87	62	2
Transportation Services	12	8	0
Communications	70	63	0
Electric, Gas & Sanitary Services	289	266	2
Wholesale Trade–Durable Goods	220	150	3
Wholesale Trade–Nondurable Goods	279	206	2

## CASES BY INDUSTRY

### FISCAL YEAR 2001

<b>INDUSTRY</b>	Reported Cases	Closed Cases	Death Cases
Building Materials & Garden Supplies	147	118	1
General Merchandise Stores	439	650	1
Food Stores	326	285	1
Automotive Dealers & Service Stations	180	144	0
Apparel & Accessory Stores	22	18	0
Furniture & Homefurnishings Stores	68	43	0
Eating & Drinking Places	442	383	3
Misc. Retail	110	67	1
Depository Institutions	30	30	0
Nondepository Institutions	8	2	1
Security & Commodity Brokers	4	1	0
Insurance Carriers	18	15	0
Insurance Agents, Brokers, & Service	15	6	0
Real Estate	107	84	1
Holding & Other Investment Offices	0	1	0
Hotels & Other Lodging Places	102	78	0
Personal Services	60	38	0
Business Services	673	522	3
Auto Repair, Services, & Parking	86	89	0
Misc. Repair Services	24	23	1

## CASES BY INDUSTRY

### FISCAL YEAR 2001

<b>INDUSTRY</b>	Reported Cases	Closed Cases	Death Cases
Motion Pictures	12	7	0
Amusement & Recreation Services	61	41	2
Health Services	961	1,042	2
Legal Services	5	3	0
Educational Services	467	376	2
Social Services	304	290	1
Museums, Botanical, Zoological Gard.	1	2	0
Membership Organizations	45	34	0
Engineering & Management Services	27	14	0
Services—Not Elsewhere Classified	2	3	0
Executive, Legislative, & General	42	86	0
Justice, Public Order, & Safety	339	328	5
Finance, Taxation, & Monetary Policy	10	11	0
Administration of Human Resources	95	111	0
Environmental Quality & Housing	41	39	1
Administration of Economic Programs	3	3	0
National Security & Intl. Affairs	8	6	0
Nonclassifiable Establishments	10	9	0
Undetermined	0	7	0
<b>TOTALS</b>	<b>12,867</b>	<b>10,940</b>	<b>73</b>

## CASES BY INDUSTRY

### FISCAL YEAR 2002

<b>INDUSTRY</b>	Reported Cases	Closed Cases	Death Cases
Agricultural Production–Crops	31	14	1
Agricultural Production–Livestock	50	25	1
Agricultural Services	124	132	2
Forestry	6	2	0
Fishing, Hunting & Trapping	4	4	0
Coal Mining	1	0	1
Oil & Gas Extraction	60	41	1
Nonmetallic Minerals, Except Fuels	17	21	0
General Building Contractors	284	204	5
Heavy Construction, Excl. Building	346	327	2
Special Trade Contractors	661	543	7
Food & Kindred Products	656	607	6
Tobacco Products	3	1	0
Textile Mill Products	13	9	0
Apparel & Other Textile	52	97	0
Lumber & Wood Products	492	481	5
Furniture & Fixtures	151	146	0
Paper & Allied Products	219	197	0
Printing & Publishing	118	63	0
Chemicals & Allied Products	84	82	0

## CASES BY INDUSTRY

### FISCAL YEAR 2002

<b>INDUSTRY</b>	Reported Cases	Closed Cases	Death Cases
Petroleum & Coal Products	16	13	0
Rubber & Misc. Plastics Products	310	313	0
Leather & Leather Products	36	30	0
Stone, Clay & Glass Products	146	95	1
Primary Metal Industries	194	210	0
Fabricated Metal Products	277	204	0
Industrial Machinery & Equipment	303	194	0
Electronic & Other Electric Equipment	223	181	0
Transportation Equipment	241	183	0
Instruments & Related Products	27	17	1
Misc. Manufacturing Industries	26	36	0
Railroad Transportation	6	0	0
Local & Interurban Passenger Transit	38	47	0
Trucking & Warehousing	1,135	1,013	13
U.S. Postal Service	0	1	0
Water Transportation	2	5	0
Transportation By Air	55	44	1
Pipelines, Except Natural Gas	1	0	0
Transportation Services	9	8	0
Communications	80	38	0

## CASES BY INDUSTRY

### FISCAL YEAR 2002

<b>INDUSTRY</b>	Reported Cases	Closed Cases	Death Cases
Electric, Gas & Sanitary Services	276	351	4
Wholesale Trade–Durable Goods	186	156	3
Wholesale Trade–Nondurable Goods	238	215	3
Building Materials & Garden Supplies	122	113	2
General Merchandise Stores	463	544	0
Food Stores	291	284	3
Automotive Dealers & Service Stations	183	155	1
Apparel & Accessory Stores	24	20	0
Furniture & Homefurnishings Stores	55	45	0
Eating & Drinking Places	500	348	1
Misc. Retail	116	96	0
Depository Institutions	30	21	0
Nondepository Institutions	1	1	0
Security & Commodity Brokers	9	3	0
Insurance Carriers	13	12	1
Insurance Agents, Brokers, & Service	5	7	0
Real Estate	62	56	0
Holding & Other Investment Offices	2	2	0
Hotels & Other Lodging Places	116	72	0
Personal Services	55	43	0

## CASES BY INDUSTRY

### FISCAL YEAR 2002

<b>INDUSTRY</b>	Reported Cases	Closed Cases	Death Cases
Business Services	528	466	1
Auto Repair, Services, & Parking	80	66	1
Mics. Repair Services	16	17	0
Motion Pictures	9	2	0
Amusement & Recreation Services	79	37	0
Health Services	966	847	1
Legal Services	10	7	0
Educational Services	456	397	1
Social Services	328	256	0
Museums, Botanical, Zoological Gard.	3	0	0
Membership Organizations	51	41	0
Engineering & Management Services	22	11	0
Private Households	1	0	0
Services–Not Elsewhere Classified	4	1	0
Executive, Legislative, & General	48	79	0
Justice, Public Order, & Safety	304	286	3
Finance, Taxation, & Monetary Policy	16	12	0
Administration of Human Resources	67	58	0

## **CASES BY INDUSTRY**

### **FISCAL YEAR 2002**

<b>INDUSTRY</b>	<b>Reported Cases</b>	<b>Closed Cases</b>	<b>Death Cases</b>
Environmental Quality & Housing	47	34	0
Administration of Economic Programs	2	3	0
National Security & Int. Affairs	11	5	0
Nonclassifiable Establishments	12	5	0
Undetermined	1	3	0
<b>TOTALS</b>	<b>12,305</b>	<b>10,805</b>	<b>72</b>

**FATALITIES BY AGE AND SEX  
FISCAL YEAR 2001**

<b>AGE IN YEARS</b>	<b>FEMALE</b>	<b>MALE</b>	<b>TOTAL</b>
14-19	1	2	3
20-29	2	7	9
30-39	0	12	12
40-49	1	13	14
50-59	1	18	19
60-69	1	8	9
70-79	0	1	1
UNKNOWN	0	6	6
<b>TOTALS</b>	6	67	73
<b>TOTAL FATALITIES FOR FY 2001 – 73</b>			

**FATALITIES BY AGE AND SEX  
FISCAL YEAR 2002**

<b>AGE IN YEARS</b>	<b>FEMALE</b>	<b>MALE</b>	<b>TOTAL</b>
14-19	0	2	2
20-29	0	10	10
30-39	1	12	13
40-49	1	18	19
50-59	0	17	17
60-69	1	6	7
70-79	0	1	1
UNKNOWN	1	2	3
<b>TOTALS</b>	4	68	72
TOTAL FATALITIES FOR FY 2002 – 72			

**PART OF BODY INJURED**  
**FISCAL YEAR 2001**

PART OF BODY INJURED	REPORTED CASES	CLOSED CASES
Multiple Head Injury	96	74
Skull	57	45
Brain	40	34
Ear(s)	36	33
Eye(s)	101	91
Nose	20	10
Teeth	9	5
Mouth	14	9
Other Facial Soft Tissue	74	50
Facial Bones	16	11
Multiple Neck Injury	84	76
Vertebrae	15	5
Disc (Neck Area)	16	51
Spinal Cord	1	0
Larynx	2	0
Soft Tissue	98	57
Trachea	0	0
Multiple Upper Extremities	223	203
Upper Arm (Inc. Clavicle & Scapula)	179	194
Elbow	196	181

**PART OF BODY INJURED**  
**FISCAL YEAR 2001**

PART OF BODY INJURED	REPORTED CASES	CLOSED CASES
Lower Arm	231	207
Wrist	612	548
Hand	533	445
Finger(s)	697	576
Thumb	196	177
Shoulder(s)	940	597
Wrist(s) & Hand(s)	190	105
Multiple Trunk Injury	86	145
Upper Back Area (Thoracic Area)	111	136
Low Back Area Inc. Lumbar & Lumbo-Sacral	2,610	2,383
Disc (Trunk Area)	68	38
Chest Inc. Ribs, Sternum, & Soft Tissue	159	153
Sacrum & Coccyx	39	36
Pelvis	24	33
Spinal Cord	7	4
Internal Organs	20	94
Heart	52	32
Multiple Lower Extremities Injury	126	121
Hip	146	100
Thigh	73	59

## PART OF BODY INJURED

### FISCAL YEAR 2001

PART OF BODY INJURED	REPORTED CASES	CLOSED CASES
Knee	1,246	1,021
Lower Leg	264	239
Ankle	520	425
Foot	404	354
Toe(s)	61	57
Great Toe	18	15
Lungs	64	47
Abdomen (Including Groin)	468	369
Buttocks	20	15
Lumbar and/or Sacral Vertebra	17	2
Artificial Appliance	1	1
Unknown (Insufficient Information)	61	17
No Physical Injury	26	13
Multiple Body Parts Injury	1,104	955
Mult. Systems & Mult. Body Systems	347	214
Unknown/Undefined/Unspecified	49	78
<b>Totals</b>	<b>12,867</b>	<b>10,940</b>

## PART OF BODY INJURED

### FISCAL YEAR 2002

PART OF BODY INJURED	REPORTED CASES	CLOSED CASES
Multiple Head Injury	77	72
Skull	49	58
Brain	33	24
Ear(s)	7	33
Eye(s)	105	84
Nose	15	14
Teeth	9	6
Mouth	13	10
Other Facial Soft Tissue	82	53
Facial Bones	18	22
Multiple Neck Injury	56	54
Vertebrae	10	8
Disc (Neck Area)	21	30
Spinal Cord	3	3
Larynx	1	0
Soft Tissue	125	76
Trachea	0	0
Multiple Upper Extremities	179	193
Upper Arm (Inc. Clavicle & Scapula)	154	191
Elbow	200	194

**PART OF BODY INJURED**  
**FISCAL YEAR 2002**

PART OF BODY INJURED	REPORTED CASES	CLOSED CASES
Lower Arm	230	181
Wrist	562	553
Hand	553	476
Finger(s)	613	556
Thumb	201	147
Shoulder(s)	869	660
Wrist(s) & Hand(s)	179	131
Multiple Trunk Injury	80	96
Upper Back Area (Thoracic Area)	112	115
Low Back Area Inc. Lumbar & Lumbo-Sacral	2,370	2,318
Disc (Trunk Area)	65	53
Chest Inc. Ribs, Sternum, & Soft Tissue	129	125
Sacrum & Coccyx	24	33
Pelvis	33	40
Spinal Cord	6	3
Internal Organs	33	76
Heart	36	29
Multiple Lower Extremities Injury	93	79
Hip	123	108

## PART OF BODY INJURED

### FISCAL YEAR 2002

PART OF BODY INJURED	REPORTED CASES	CLOSED CASES
Thigh	65	56
Knee	1,212	1,018
Lower Leg	254	237
Ankle	464	424
Foot	388	330
Toe(s)	51	49
Great Toe	29	14
Lungs	69	39
Abdomen (Including Groin)	444	324
Buttocks	36	16
Lumbar and/or Sacral Vertebra	51	15
Artificial Appliance	1	1
Unknown (Insufficient Information)	95	35
No Physical Injury	32	14
Multiple Body Parts Injury	1,340	1,050
Mult. Systems & Mult. Body Systems	279	215
Unknown/Undefined/Unspecified	27	64
<b>Totals</b>	<b>12,305</b>	<b>10,805</b>

## EXPENDITURE REPORT – COMPENSABLE CASES FISCAL YEAR 2001

<b>EXPENDITURES</b>	<b>PRIVATE</b>	<b>SELF-INS.</b>	<b>PUBLIC</b>	<b>TOTALS</b>
Compensation	\$34,015,075.35	\$12,823,553.35	\$2,856.60	\$46,841,485.30
Lump Sum	\$568,052.16	\$257,575.56	-0-	\$825,627.72
Joint Petition	\$12,494,316.71	\$4,685,685.92	\$750.00	\$17,180,752.63
Attorney Fees	\$3,469,042.61	\$2,436,886.03	\$1,013.75	\$5,906,942.39
Other (1)	\$459,328.99	\$257,869.10	-0-	\$717,198.09
Hospital	\$12,543,223.17	\$5,169,515.54	\$3,752.60	\$17,716,491.31
Medical	\$27,553,874.96	\$14,114,504.28	\$2,887.38	\$41,671,266.62
Medicine	\$1,383,015.05	\$551,756.22	\$320.29	\$1,935,091.56
Funeral	\$195,600.98	\$91,884.92	-0-	\$287,485.90
Rehabilitation	\$1,191,664.09	\$303,392.63	-0-	\$1,495,056.72
Other (2)	\$2,392,713.87	\$1,008,943.40	\$218.40	\$3,401,875.67
<b>TOTALS</b>	<b>\$96,265,907.94</b>	<b>\$41,701,566.95</b>	<b>\$11,799.02</b>	<b>\$137,979,273.91</b>

This chart lists expenditures filed with the Commission on reported lost time cases closed in FY 2001. Other (1) [Compensation Related]. Other (2) [Expense Related].

## EXPENDITURE REPORT – COMPENSABLE CASES FISCAL YEAR 2002

EXPENDITURES	PRIVATE	SELF-INS.	PUBLIC	TOTALS
Compensation	\$29,105,891.16	\$15,477,651.96	\$76,623.70	\$44,660,166.82
Lump Sum	\$784,161.64	\$384,679.90	-0-	\$1,168,841.54
Joint Petition	\$16,957,940.80	\$4,549,050.89	-0-	\$21,506,991.69
Attorney Fees	\$4,354,328.67	\$2,350,192.68	\$2,027.36	\$6,706,548.71
Other (1)	\$357,792.89	\$325,937.79	-0-	\$683,730.68
Hospital	\$12,031,664.10	\$5,573,150.78	\$3,224.00	\$17,608,038.88
Medical	\$30,988,210.35	\$16,355,600.14	\$1,682.22	\$47,345,492.71
Medicine	\$1,635,342.66	\$674,954.73	\$53.92	\$2,310,351.31
Funeral	\$146,131.66	\$88,710.58	\$6,000.00	\$240,842.24
Rehabilitation	\$1,201,200.34	\$487,413.33	-0-	\$1,688,613.67
Other (2)	\$4,525,366.13	\$1,319,935.97	\$1,613.24	\$5,846,915.34
<b>TOTALS</b>	<b>\$102,088,030.40</b>	<b>\$47,587,278.75</b>	<b>\$91,224.44</b>	<b>\$149,766,533.59</b>

This chart lists expenditures filed with the Commission on reported lost time cases closed in FY 2002. Other (1) [Compensation Related]. Other (2) [Expense Related].

**MEDICAL ONLY**  
**EXPENDITURE REPORT**  
**Fiscal Years 2001 and 2002**

	<b>FY 2001</b>	<b>FY 2002</b>
<b>PUBLIC</b>	\$ 505,008.70	\$ 505,091.56
<b>SELF-INSURER</b>	\$ 6,743,163.93	\$ 7,341,340.91
<b>SELF-INS. TRUST</b>	\$ 2,769,837.12	\$ 3,156,461.97
<b>PRIVATE</b>	\$ 8,806,179.76	\$ 9,338,576.01
<b>TOTALS</b>	<b>\$18,824,189.51</b>	<b>\$20,341,470.45</b>